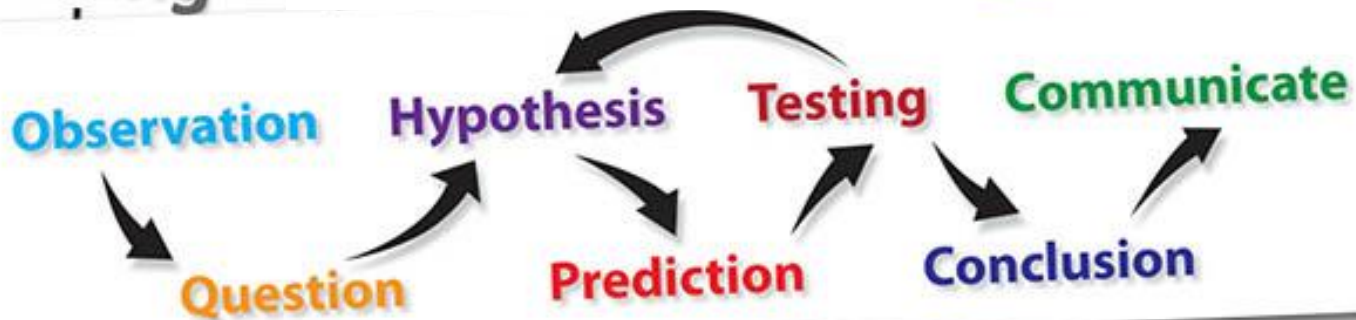
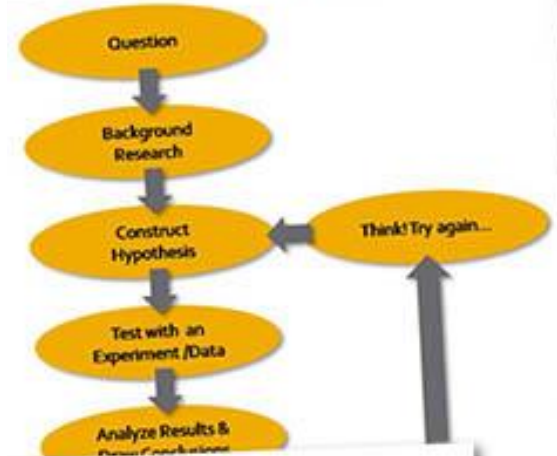
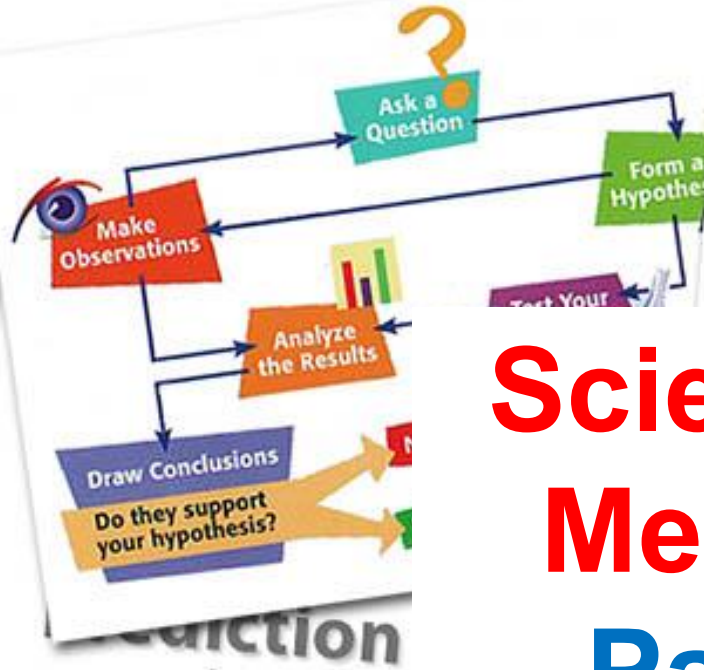


Scientific Method Part 1



Describe the Elephant



*Observation
should NOT
include
opinion!*

It weighs 480 kilograms.

It has large ears and long trunk.

It has gray wrinkly skin.

~~**It is very cute!**~~

It is young.

It is about 1.5 yards tall.

Qualitative vs Quantitative Data

Qualitative (letters)

- **Descriptions** using **words**.
- Data which can be **observed** but **not measured**.
- What the object is *like*: texture, smell, taste, appearance, etc.

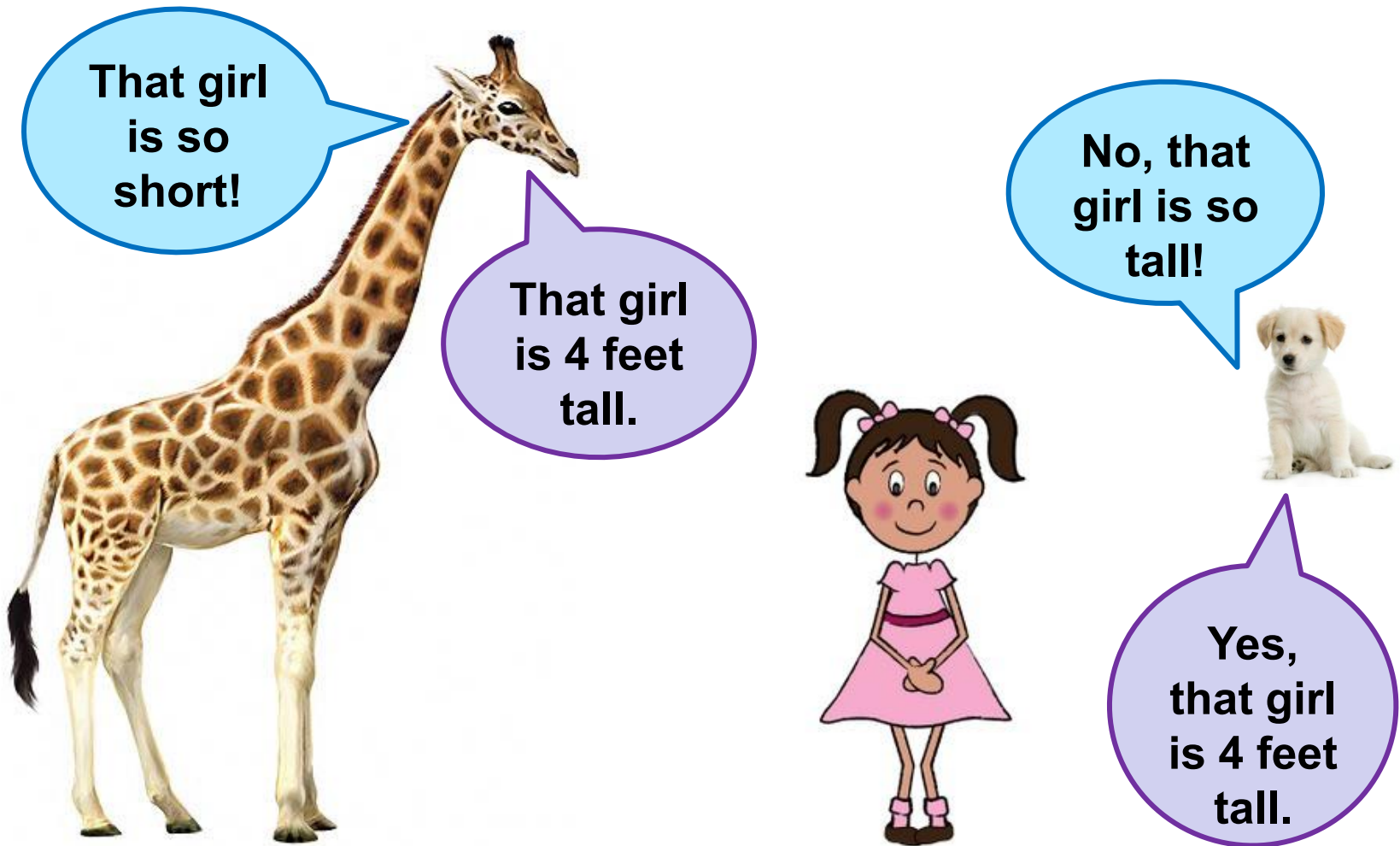
Subjective, relative

Quantitative (numbers)

- Specific **numbers**.
- Data which can be **measured**.
- Length, height, area, volume, weight, speed, time, temperature, humidity, sound levels, cost, age, etc.

Objective, specific

Qualitative observations are **subjective**



Quantitative observations are **objective**

Observation depends on observer

- Location and size of an observer
- Observer limitations



can only see visible light



can see ultraviolet light



Describe the Substances



**TABLE
SALT**



**S
U
G
A
R**



**S
N
O
W**

Describe the Crystals

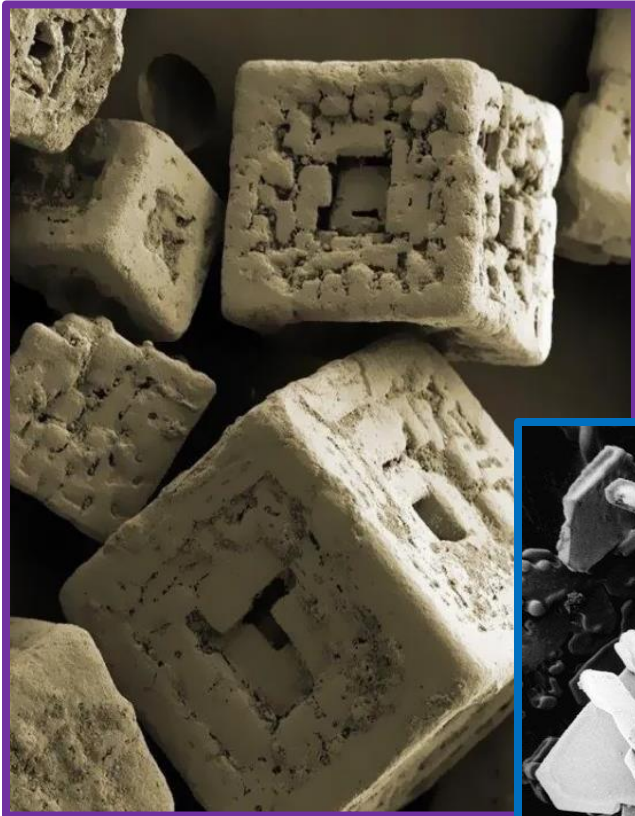
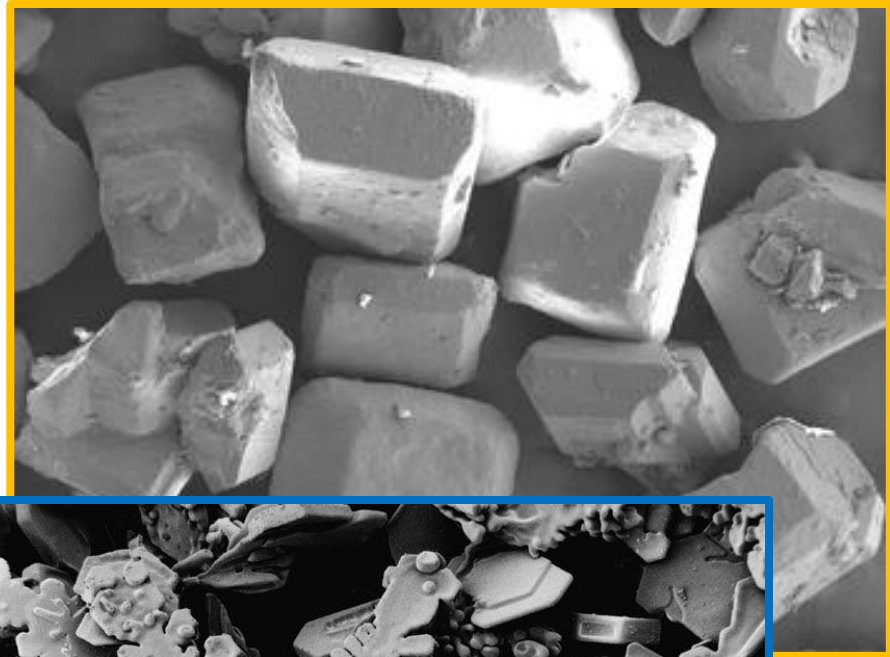


TABLE
SALT



S
U
G
A
R



S
N
O
W