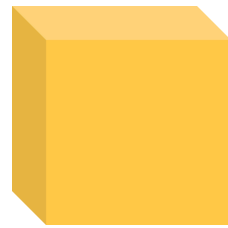
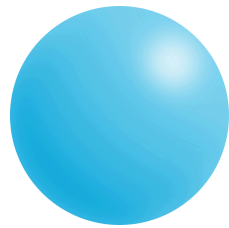


Homework 16

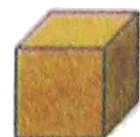
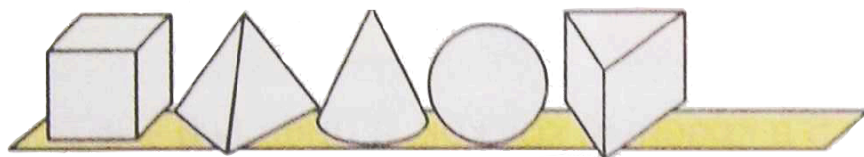
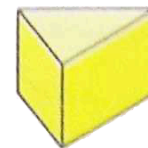
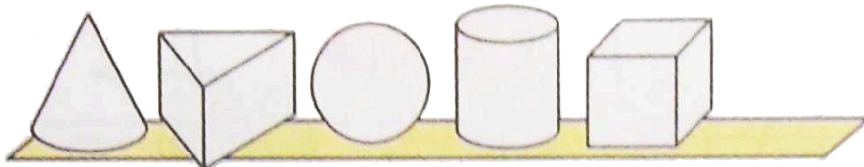
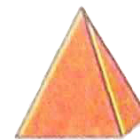
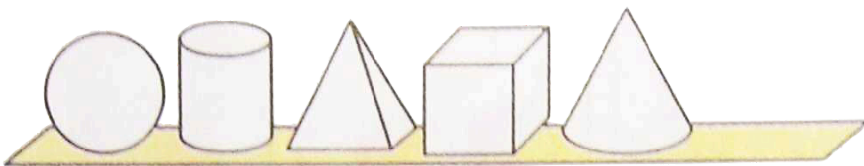
Problem 1

Choose a shape from the row in the bottom that is different by color, shape and size compared to the sphere and cube and put it in between them.



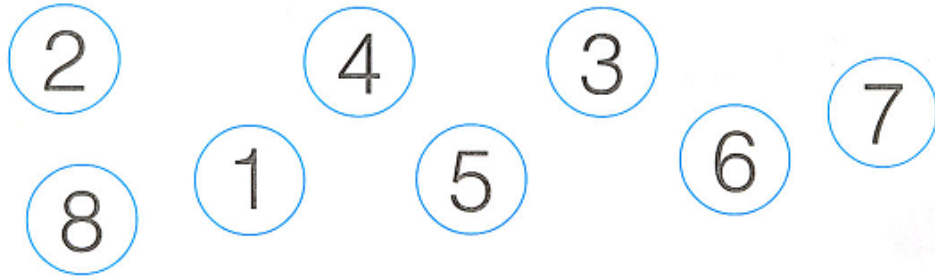
Problem 2

6 different shapes are supposed to be on each shelf. Connect each shelf with the missing shape on the right. Color in all the shapes so that they match the shapes on the right.



Problem 3

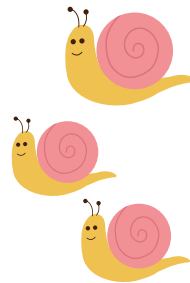
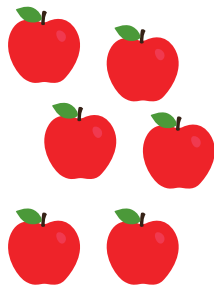
Color in yellow the circle with the number 7.



Write 7 in the boxes.

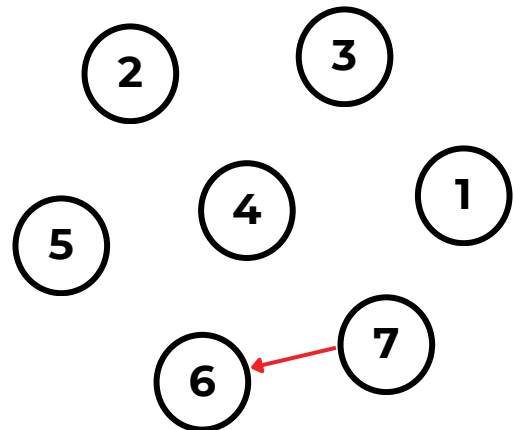
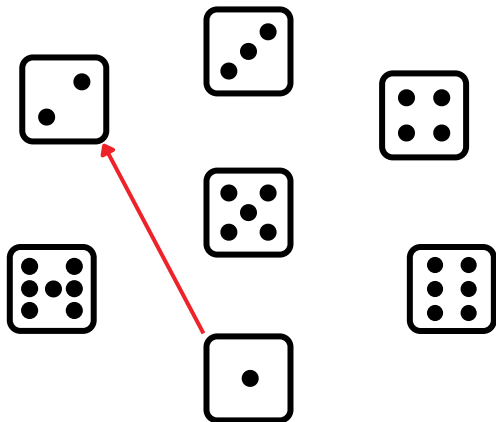
Problem 4

Count the objects in the pictures and write the correct numbers in the boxes below each picture. Circle the picture with 7 objects.



Problem 5

Use arrows to show how the numbers are increasing from 1 to 7 and decreasing from 7 to 1.



Problem 6

Count the circles from left to right and color them in.

4 circles ○ ○ ○ ○ ○ ○ ○ ○ ○ ○

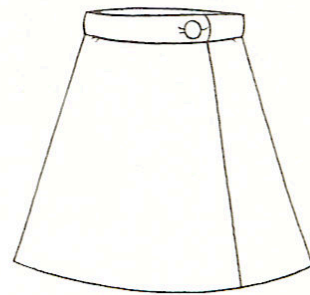
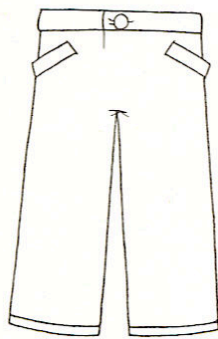
The 4th circle ○ ○ ○ ○ ○ ○ ○ ○ ○ ○

7 circles ○ ○ ○ ○ ○ ○ ○ ○ ○ ○

The 7th circle ○ ○ ○ ○ ○ ○ ○ ○ ○ ○

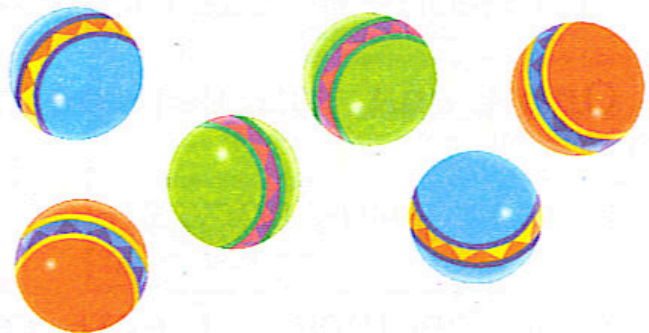
Problem 7

Color in neither the skirt nor the shirt.



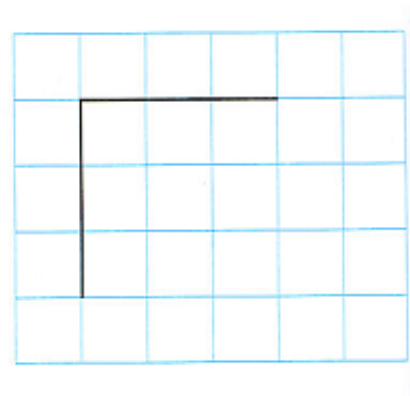
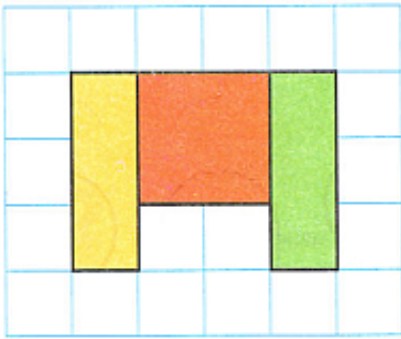
Problem 8

One hoop can only hold 3 balls. How many hoops do you need to put all the balls? Draw the hoops.



Problem 9

Make the two drawings look exactly the same.



Problem 10

In the row below, only color in the shapes that you can find in the puzzle.

