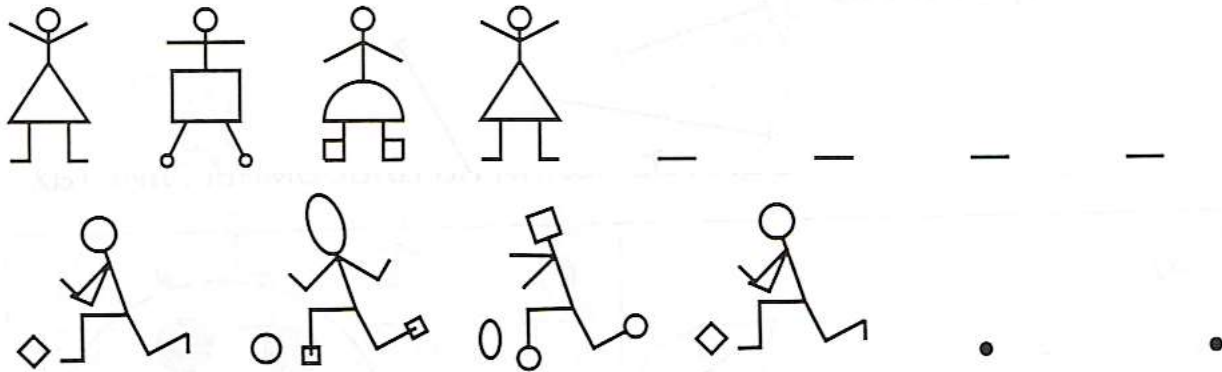


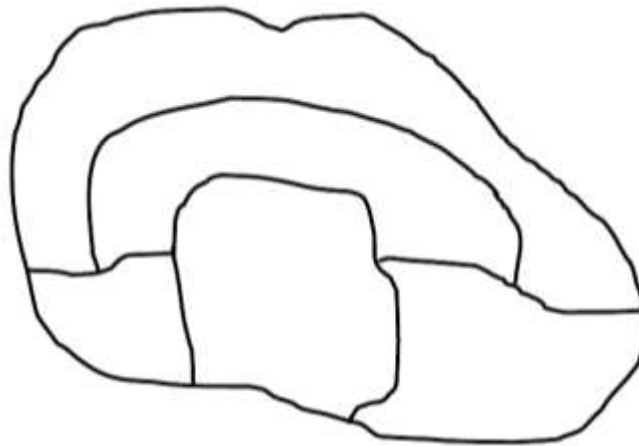
Math 0

Homework 22.

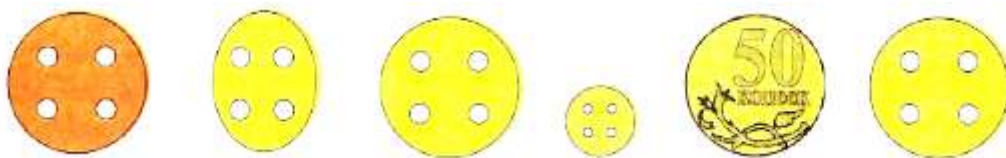
Problem 1. Continue the pattern.



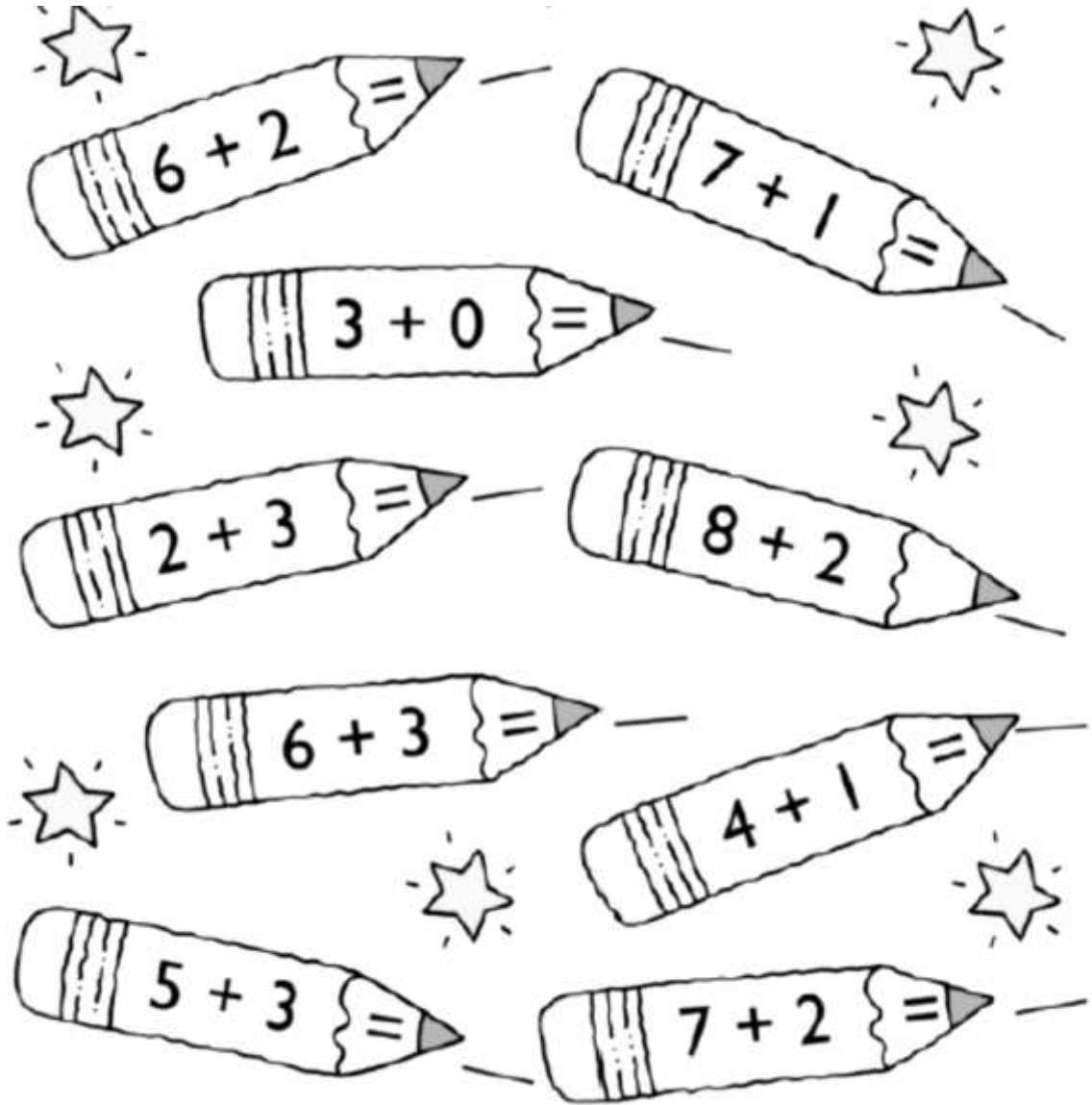
Problem 2. Color a picture in a way that the neighboring regions (areas) are colored differently. Use only 3 colors.



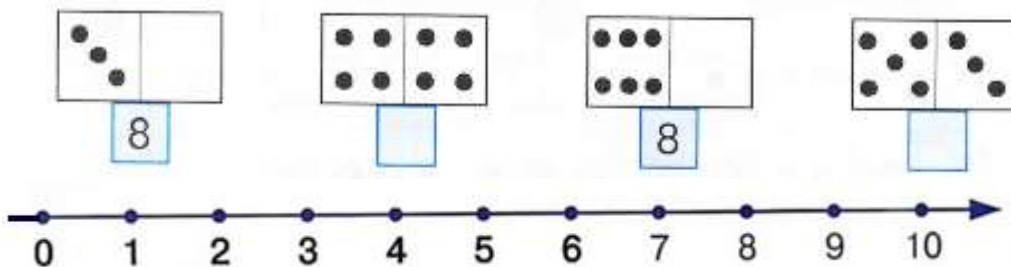
Problem 3. What does not belong and explain why.



Problem 5. Solve the problems and color in **YELLOW** if the sum is equal to 3, in **RED** if the sum is equal to 5, in **GREEN** if the sum is equal to 8, in **BLUE** if the sum is equal to 9, in **PURPLE** if the sum is equal to 10.



Problem 6. Complete to make 8.



Problem 7. Based on the picture below (the number lines), record your number sentences and solve them.

8

7 1

$7 + 1 = \square$

$\square + \square = \square$

$8 - 7 = \square$

$\square - \square = \square$

8

6 2

$6 + 2 = \square$

$\square + \square = \square$

$8 - 6 = \square$

$\square - \square = \square$

8

5 3

$\square + \square = \square$

$\square + \square = \square$

$\square - \square = \square$

$\square - \square = \square$

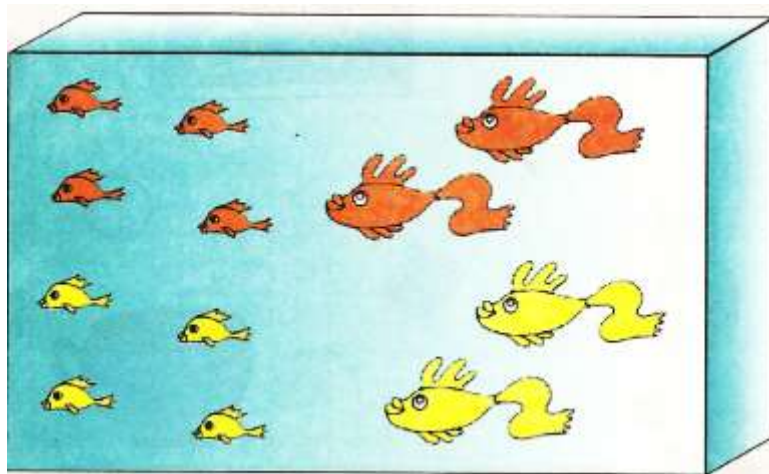
8

4 4

$\square + \square = \square$

$\square - \square = \square$

What common characteristics do the fish have? Using lines, divide the fish into groups according to their common characteristics (similarities). How many groups do you get?



Problem 8. Fill out the missing numbers. Discuss what comes before and after.

4		6	12		14	18	19	
7		9	15	16			15	
9	10			18		17		19
	9	10	11		13	18		20

Problem 9. Record the number expression under each picture. Draw your own pictures to match the number expressions. Place “>”.”<” or “=” signs.

>, <, =

$3 + 1$	$<$	$3 + 3$	
	$<$		$2 + 1$
	$<$	$2 + 3$	

Choose figures from the first “bag” and draw them in the empty “bags” to match the number expressions below.

Problem 10. What shape is missing?

Problem 11. Solve.

$7 - 5 + 2 = \square$	$3 - 2 + 5 = \square$	$4 + 3 - 5 = \square$
$2 + 1 + 3 = \square$	$1 + 6 - 4 = \square$	$7 - 2 - 4 = \square$