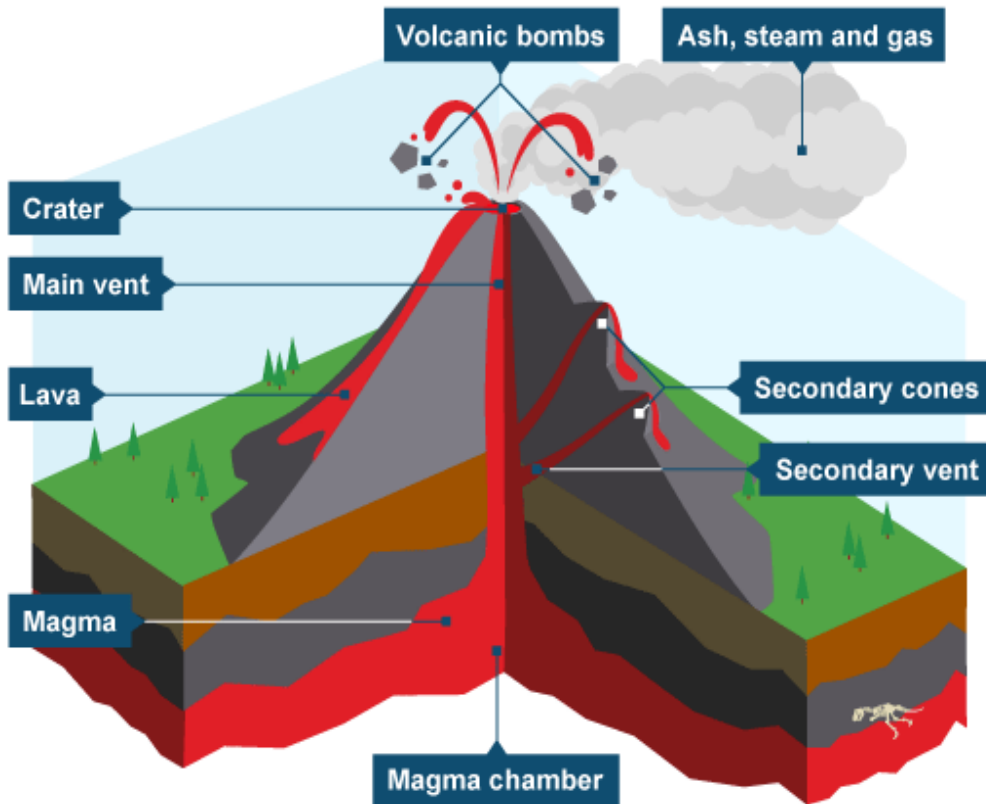


Parts of a Volcano

1. VENT - the vent is the opening from which **lava** flows.



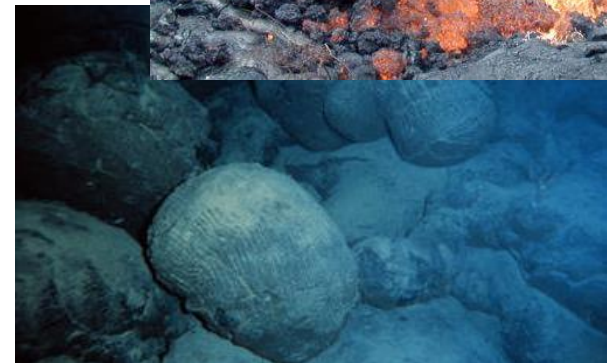
- A volcano can have **several vents**.
- **Dust, ash, and rock particles** can also be thrown out of the vent!

Lava is magma that reached the surface!

Lava (“the liquid”) is mostly molten rock:



- **Pahoehoe lava** - basaltic lava, low viscosity (flows easily), allows gases to escape.
- **Aa lava** (pronounced “aa-aa”) - basaltic lava, higher viscosity; solidifies flowing, forms angular pieces.
- **Pillow lava** - lava extruded *underwater*; cools and contracts, forms spherical masses; found at the ocean floor.



Viscosity of lava is mostly determined by the *amount of silica* in it.

Selected Lava Videos

Pahoehoe lava flow, Big Island, Hawaii

<https://www.youtube.com/watch?v=XQVBBdFY8pk>

Lava fountains, Iceland

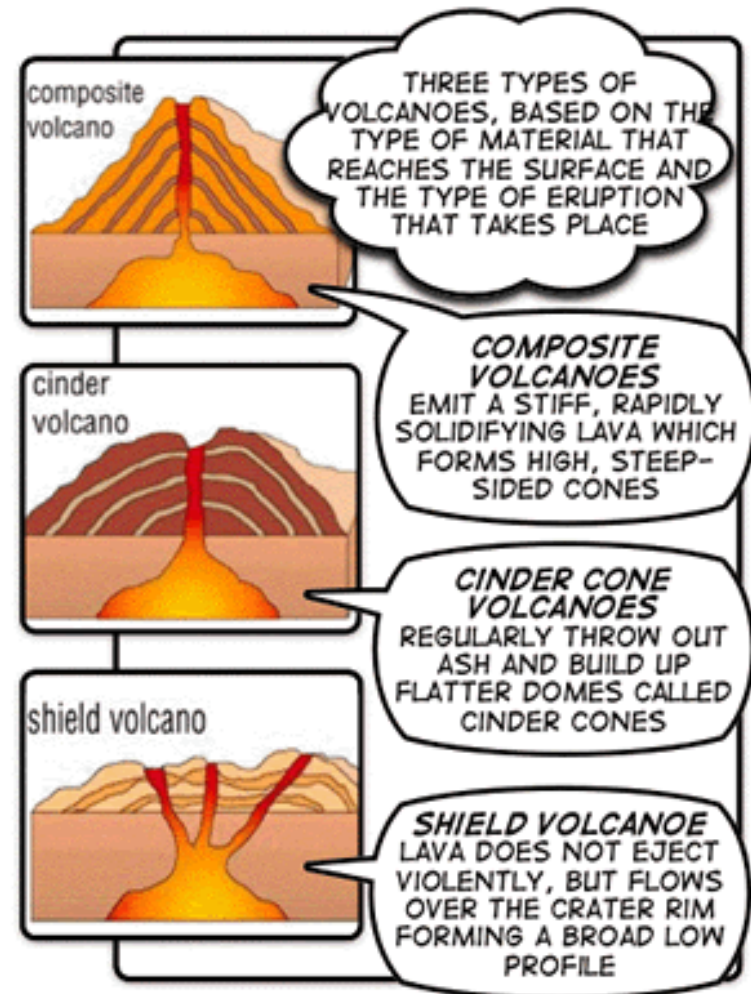
<https://www.youtube.com/watch?v=fmCJSS2YAP0>

Viscous (Aa) lava flow, Big Island, Hawaii

<https://www.youtube.com/watch?v=ndB2WRwyK1w>

Parts of a Volcano

2. **VOLCANIC CONE** - the pile of lava, dust, ashes, mud, and rock around the vent.



It can be found in different shapes!

Parts of a Volcano

3. CRATER - the top of the volcano.



This **funnel-shaped pit** is formed when the material is ejected out of the vent!



Selected Eruption Videos

Eruption of Mt Etna, Sicily, Italy

<https://www.youtube.com/watch?v=coqEmEyg95Q>

Krakatau eruption

<https://www.youtube.com/watch?v=JmPuy-pqIQE>

Different Volcanoes Erupting Across The World

<https://www.youtube.com/watch?v=vMM9KFM3tTg>