

Homework

- 1 In your notebook, solve the equations and write your solutions similarly to the example. Copy your answers here. Make drawings if needed.

$$x - 235 = 316$$

$$x =$$

$$791 - y = 385$$

$$y =$$

$$z - 456 = 119$$

$$z =$$

- 2 Compare:

$$a - c \square a - (c + 1)$$

$$a - c \square a - c + 1$$

$$a + 5 \square a - 5$$

$$a - c \square a - (c - 1)$$

$$a - c \square a - c - 1$$

$$a - b + c \square a + c - b$$

- 3 Foxy Tail, Little Joe, Pop Eye, and Jake the Mouse got many presents on Christmas and New Year holidays from friends. Little Joe got 8 presents. Jake the Mouse got 2 more presents than Little Joe. Foxy Tail got 1 present less than Little Joe. Pop Eye got 1 present more than Little Joe.

Which questions may be answered by evaluating the following expressions?

a) $8 + 2$ - How many presents ... _____

b) $8 - 1$ - _____

c) $8 + 1$ - _____

d) $8 + (8 - 1)$ - _____

e) $8 + (8 + 1)$ - _____

f) $(8 + 2) - (8 + 1)$ - _____

j) $8 + (8 + 1) + (8 + 2)$ - _____

h) $8 + (8 + 2) + (8 + 1) + (8 - 1)$ _____

4

Write the expression for each problem.

There was **10** fish in an aquarium, and then **8** more fish were added. How many fish are in the aquarium?

There are ***m*** fish in an aquarium, and then **6** more fish were added. How many fish are in the aquarium?

There are ***m*** fish in an aquarium, and then ***k*** more fish were added. How many fish are in the aquarium?

There are **16** fish in the first aquarium and **12** fish in the second aquarium. How many more fish are in the first aquarium than in the second one?

There are ***n*** fish in the first aquarium and ***t*** fish in the second aquarium. How many more fish are in the first aquarium than in the second one?

5

Order the steps to come up with an algorithm to cook instant noodles in a microwave oven:



1. Open the lid half way

___ Cook for 5 minutes in a microwave

___ Add water to fill line

___ Mix in the sauce

___ Remove lid

___ Remove the sauce packet

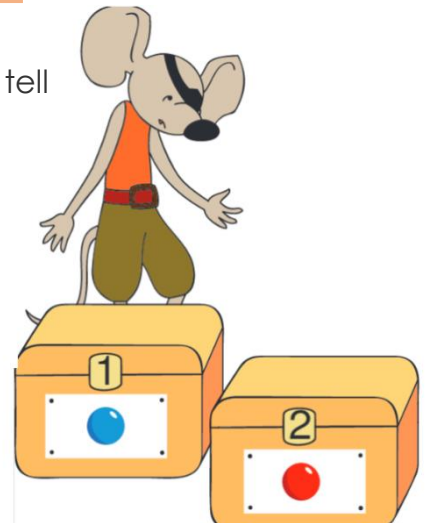
6

There are two boxes and two balls (red and blue) . The balls are in the boxes – one ball in each box. Can you tell where are the balls if

a) both tags are TRUE? _____

b) both tags are FALSE? _____

Can it be that one tag is TRUE and the other is FALSE?
Why? _____



7

Plot the line of symmetry for every house that has it. For every house lacking a symmetry line circle the part that breaks the symmetry.

a.



b.



c.



d.



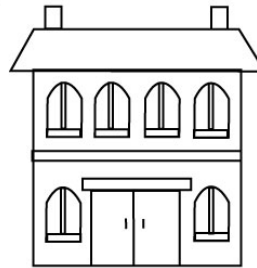
e.



f.



g.

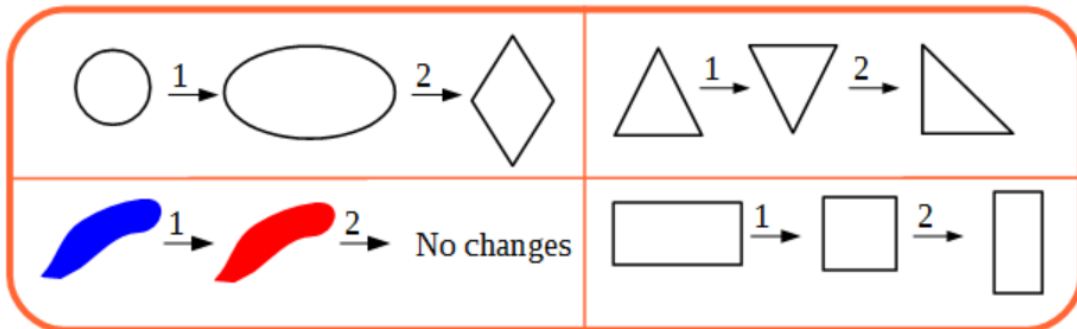


h.

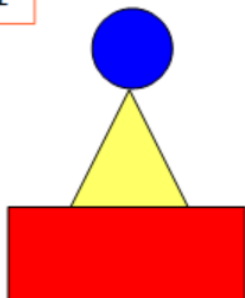


8

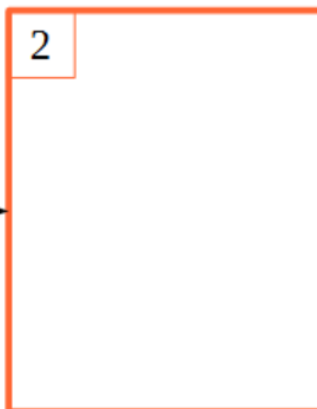
Change the drawing twice according to the rules:



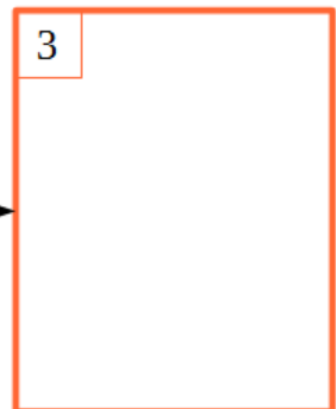
1



2

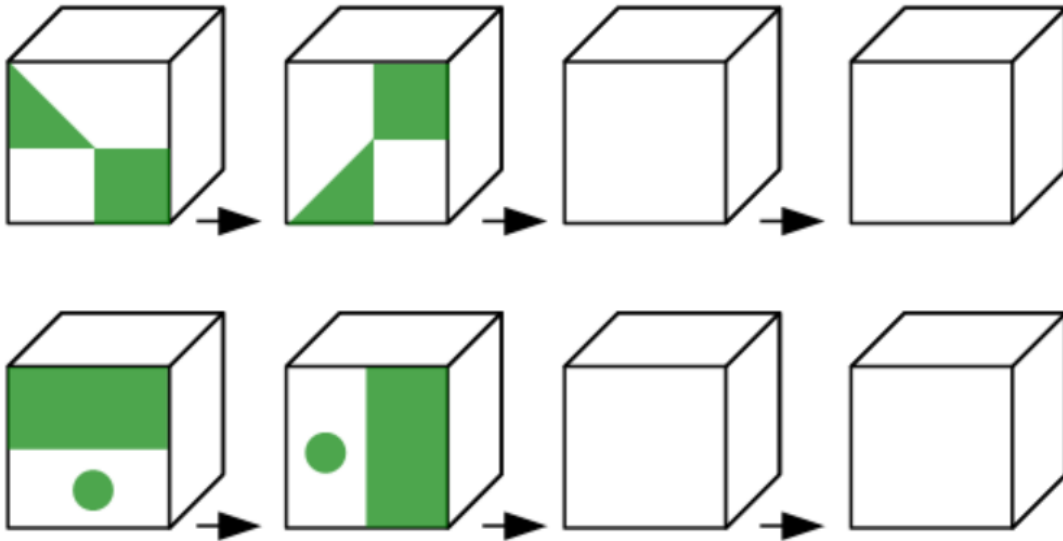


3



9

Guess which way the cube turns and reconstruct the missing drawings on the faces.



10

There are four SETs on this picture! Find them all! Cross out the cards that belong to a set in each picture. Same group of 9 cards but different 4 sets.

