

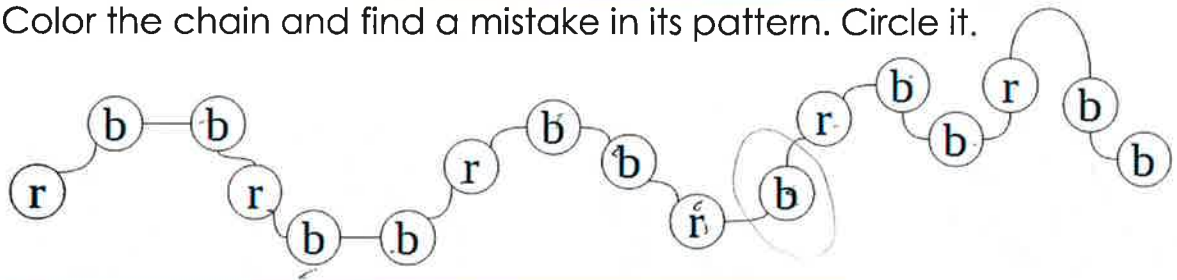
Homework

1 Write down the next two numbers in the series and read them:

a) 10, 30, 50, ____, ____ b) 9, 29, 49, ____, ____

c) 23, 34, 45, ____, ____ d) 18, 15, 12, ____, ____

2 Color the chain and find a mistake in its pattern. Circle it.



3 Make four possible equalities using each trio of numbers.

8, 9, 17

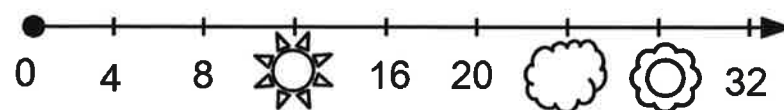
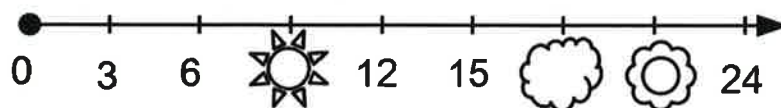
$$8 + 9 = 17$$

4, 11, 15

$$15 - 4 = 11$$

6, 17, 23

4 Which numbers on the number lines are covered?

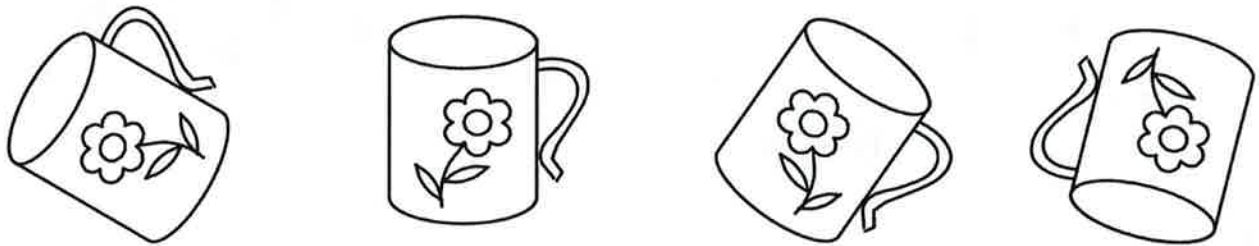


5 Solve the word problem.

An ornament has 12 circles, 6 squares and 9 rectangles (which are not squares). 24 out of these shapes are large, while others are small. How many small shapes are in the ornament?

$$\begin{array}{c} 12 + 6 + \quad = \\ \text{L} \quad \quad \quad \text{S} \\ \quad \quad \quad \quad \quad \quad ? = \end{array}$$

6 Circle the cup that is different from the rest.



What makes it different?

7 Complete the equalities as needed.

$$\triangle \cdot \cdot \cdot = 16 \quad \cdot \cdot \cdot \triangle \cdot \cdot \cdot = \underline{\quad} \quad \underline{\quad} = 30$$

$$\underline{\quad} = 23 \quad \underline{\quad} = 3 \quad \cdot \cdot \cdot \triangle \triangle \triangle = \underline{\quad}$$

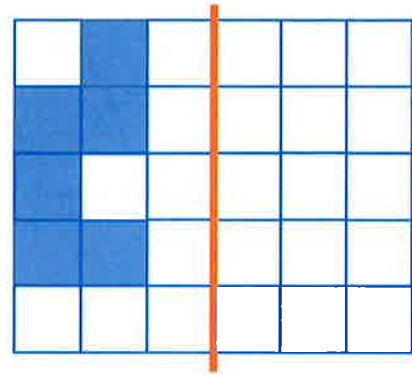
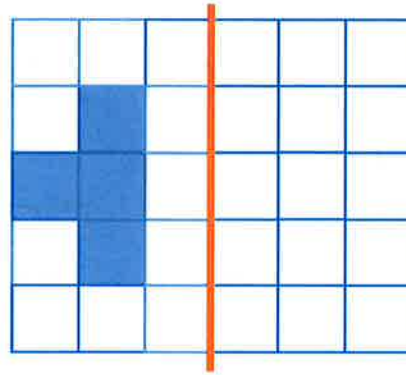
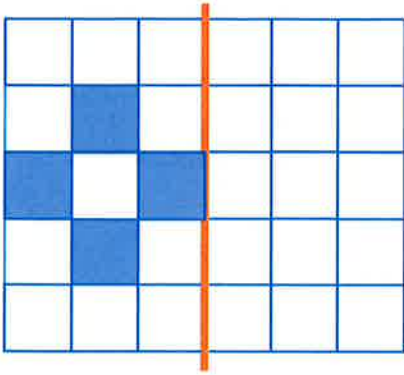
8 Fill in the tables.

a	0	6	9	12	30	41	53	74	85
a + 4			13						

c	12	27	36	49	54	68	75	82	93
c - 12							63		

9

Add the mirror image of each figure.



10

Solve the equations below and check your answers.



$$x + 3 = 12$$



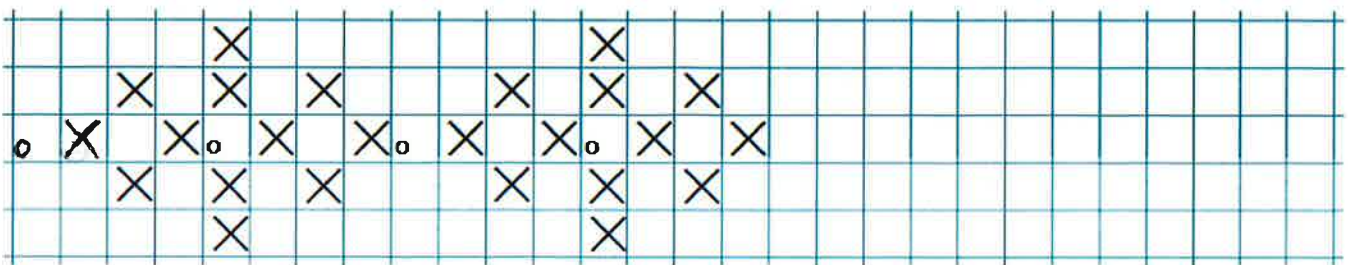
$$x - 5 = 8$$



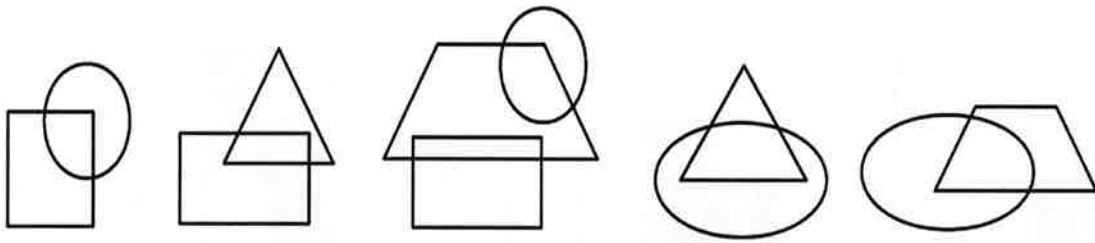
$$13 - x = 2$$

11

Continue the ornament.



12 Circle the drawing that does not belong here.



13 Color the shapes properly.

14 Replace the shapes from the table above according to the rule below and fill in the table.