

Homework 5

Lensmaker's equation.

We found that the refraction at the concave spherical surface gives:

$$\frac{n_1}{s} - \frac{n_2}{s'} = \frac{n_1 - n_2}{R} \quad (1)$$

Here n_1 and n_2 are refractive indices of 2 medias, s is the distance from the source to the concave surface (the concave surface is bent "from the source"), s' is the distance to the image, R is the radius of the surface.

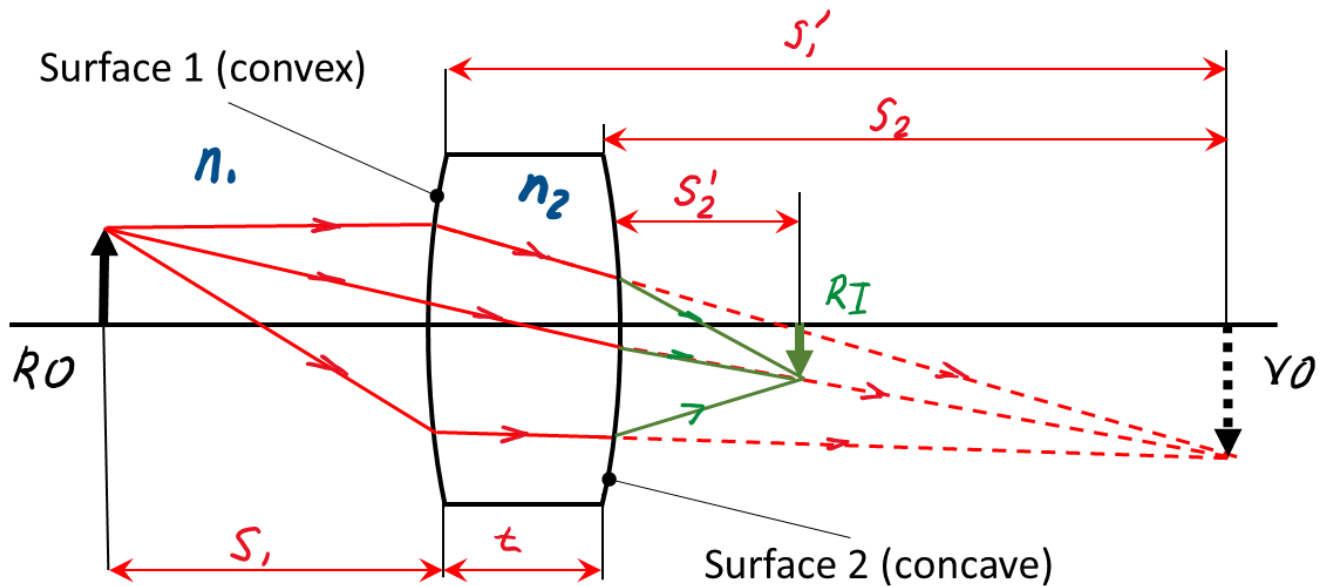


Figure 1. Ray diagram of a convex lens.

We can rewrite the expression (1) using the same sign convention we used for the spherical mirrors:

$$\frac{n_1}{s} + \frac{n_2}{s'} = \frac{n_2 - n_1}{R} \quad (2)$$

This sign convention is: **“positive distances for real images and objects, negative distances for the virtual ones. Positive radius of curvature for convex surfaces and negative for concave ones.”**

Now let us consider area with a refraction index n_2 , bounded by 2 spherical surfaces with different radii of curvature R_1 , left and R_2 , right (Figure 2). This area works as a convex lens. The light rays emanated from object RO (real object) are refracted at the surface 1 (convex, as it is “seen” by the rays). After the refraction they converge as if they would meet at the tip of object VO, and we can write:

$$\frac{n_1}{s_1} + \frac{n_2}{s_1'} = \frac{n_2 - n_1}{R_1} \quad (8)$$

But this does not happen because the rays are intercepted by the second surface which they “see” as a concave one. This “interception”, of course, does not affect the refraction at the first surface. Note, that on this time they come from the media with refractive index n_2 to the media with a refractive index n_1 . After the refraction at the second surface the rays are focused and form a real image RI. What is the relation between the distance to the “would be” image VO and the real image RI? To answer this question let us consider just the second surface. We learned that if we would be able to reverse the time, the trajectories of the light rays would have stayed the same, but the propagation directions would have changed to the opposite ones. In other words, geometrical optics is “time reversible”. So, let us reverse the time. In this case, the light rays will be emitted from the object RI and, after refraction at the second surface, they will diverge as if they would have come from VO, which, in this case, would work as a virtual image. So, we can write same expression as (8).

$$\frac{n_2}{s_2} + \frac{n_1}{s_2'} = \frac{n_1 - n_2}{R_2} \quad (9)$$

We should keep in mind that in reality the rays go *toward* VO rather than from it, so VO works as a “*virtual object*”. Now, the distance s_2 to the virtual object is:

$$s_2 = -(s_1' - t) = t - s_1' \quad (10)$$

We used negative sign since VO is a virtual object. In a “thin lens approximation”, we can neglect t (later we will give more accurate criteria for the “thin lens”). In this case

$$s_2 \approx -s_1' \quad (11)$$

Now we can substitute $-s_1'$ instead s_2 in to equation (9) and add equations (8) and (9):

$$\frac{n_1}{s_1} + \frac{n_1}{s_2'} = (n_2 - n_1) \left(\frac{1}{R_1} - \frac{1}{R_2} \right) \quad (12)$$

Now s_1 is the original object distance s_o and s_2' is the final image distance s_i so, after dividing both parts of the equation (12) by n_1 we have:

$$\frac{1}{s_o} + \frac{1}{s_i} = \frac{n_2 - n_1}{n_1} \left(\frac{1}{R_1} - \frac{1}{R_2} \right) \quad (13)$$

The *focal length* f of the thin lens is defined as the image distance for an object at infinity (in this case the light rays from the object are parallel). If $s_o \rightarrow \infty$, then $1/s_i \rightarrow 0$, and $s_i \rightarrow f$, so we have:

$$\frac{1}{f} = \frac{n_2 - n_1}{n_1} \left(\frac{1}{R_1} - \frac{1}{R_2} \right) \quad (14)$$

Equation 14 is called “*lensmaker’s equation*”. This equation makes it possible to calculate focal distance of the lens if you know the radii of curvature of the sides and refractive indices of the lens material (n_2) and the media where the lens is used (n_1) (Figure3). Equation (13) can be then rewritten as:

$$\frac{1}{s_o} + \frac{1}{s_i} = \frac{1}{f} \quad (15)$$

This is the same equation we used for the reflection at spherical surfaces. Now we can give a more accurate definition of the thin lens: a lens is considered “thin” if the thickness of the lens is much less than its focal distance.

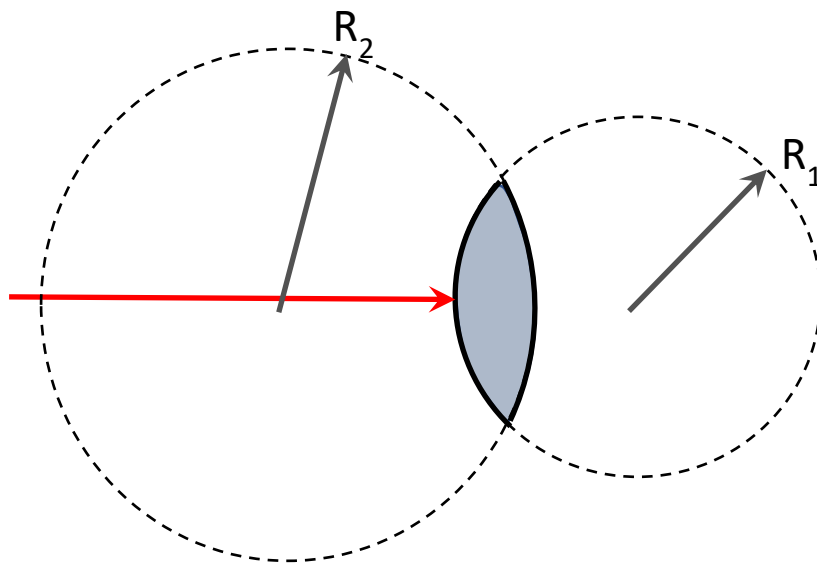


Figure 3. Biconvex lens

For the biconvex lens shown in Figure 1 light moving from left to right first “meets” the convex surface with radius of curvature R_1 . Then, moving inside the lens, the light “meets” another surface, concave, with radius of curvature R_2 . So in the lensmaker’s equation for a biconvex lens R_2 has to be taken with “minus” sign.

Problems:

1. Does the focal distance of a lens change if we immerse the lens it in water?
2. Can same lens work as a converging or diverging lens depending on the substance it is placed in?
3. Find a formula for the focal distance of a symmetrical biconvex lens with both radii of curvature equal to R and the lens material refractive index in n . The lens will be used in air ($n_{air} \approx 1$).

Compare this formula with the formula for the focal distance of a spherical mirror with the same radius of curvature.

4. In a thick glass plate there is a hollow shaped as a convex lens. Will this “lens” work as converging or diverging? Prove your answer.
5. A convex-concave lens (see fig. below) has radii of curvature $R=10\text{cm}$ and $3R$. Find refractive index of the lens material if its focal length is 20 cm. (The lens is in air, $n=1$)

