



6.

What is the area in sq. cm of a table, which is 2m long and 7dm wide?

A = _____

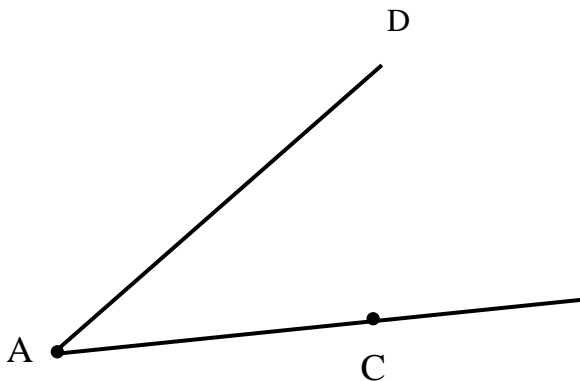
7.

Jonathan's mother wants to repaint one wall in his room. The wall is 10 feet long, the ceiling of the room is 8 feet high. There is a one window in the wall, which is 3 foot wide and 5 foot high. What is the area in square feet of the part of the wall that she wants to paint? Draw a picture of the wall with a window to help you with calculations.

A = _____

8.

Use a **compass** to find a point B on the side of the angle $\angle DAC$, so that the point B is at the same distance from the vertex of the angle – A, as point C is, but lies on the other side of the angle. .



9.

Mark the order of operations and evaluate the following expressions:

$$749 \div 749 + 0 \div 319 - 219 \times 0 = \underline{\hspace{4cm}}$$

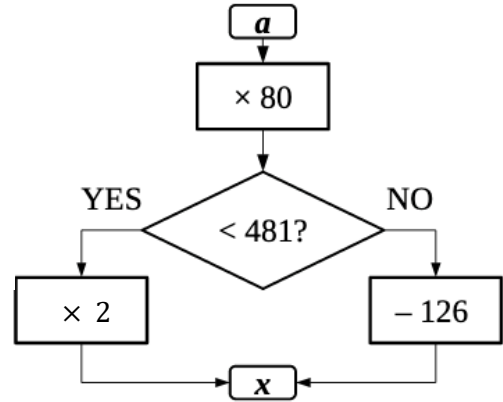
$$(626 - 108) + (132 - 76 + 204) - (252 - 184) = \underline{\hspace{4cm}}$$

$$626 - (108 + 132) + (76 + 204 - 252) - 184 = \underline{\hspace{4cm}}$$



10 To solve the riddle, fill in the first table values for x ; then in the second table arrange the letters in the decreasing order for x .

a	1	2	3	4	5	6	7	8	9
x									
	E	N	P	R	O	P	I	U	C



x									
Letter									

11 The area of the rectangle is 24 cm^2 . How long can be the sides of such a rectangle? Fill in the possible values of a and b (sides of the rectangle) and perimeters for each rectangle with an area of 24 cm^2 .

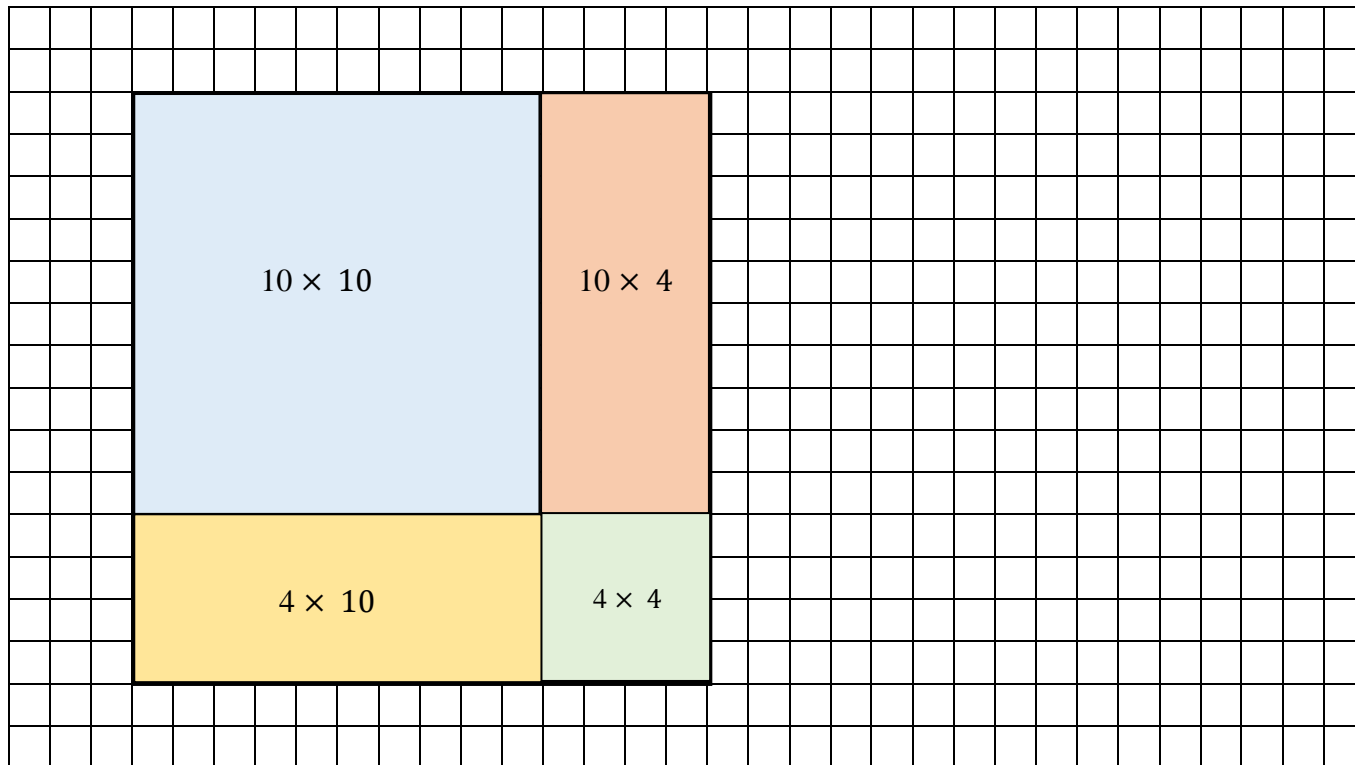
	24 cm^2	24 cm^2	24 cm^2	24 cm^2
a				
b				
P				

12 The perimeter of the rectangle is 24 cm . How long can be the sides of such a rectangle? Fill in the possible values of a, b, c and d (sides of the rectangle) and areas for each rectangle with a perimeter of 24 cm .

	24 cm	24 cm	24 cm	24 cm	24 cm	24 cm
a						
b						
c						
d						
A						

13

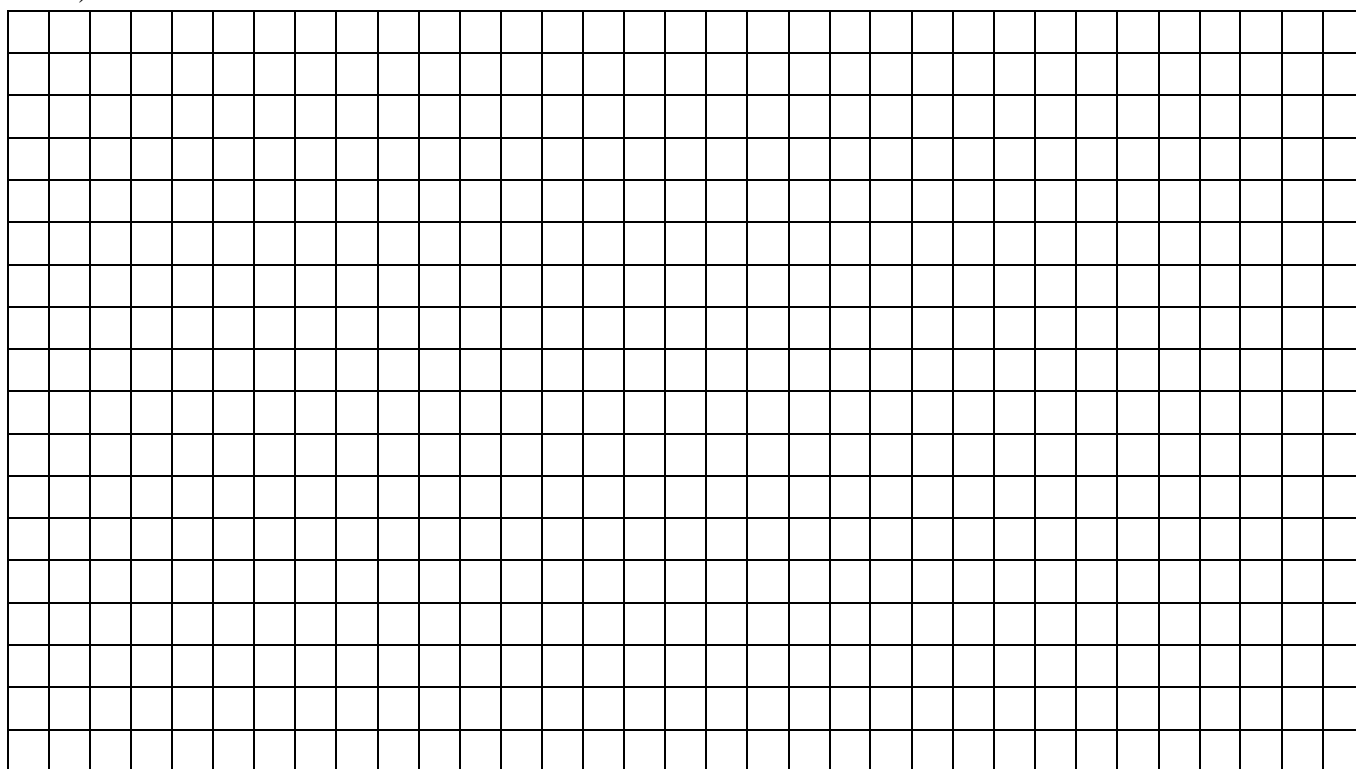
Use a distributive property of multiplication to calculate.

Example: $14 \times 14 = (10 + 4) \times (10 + 4) =$ 

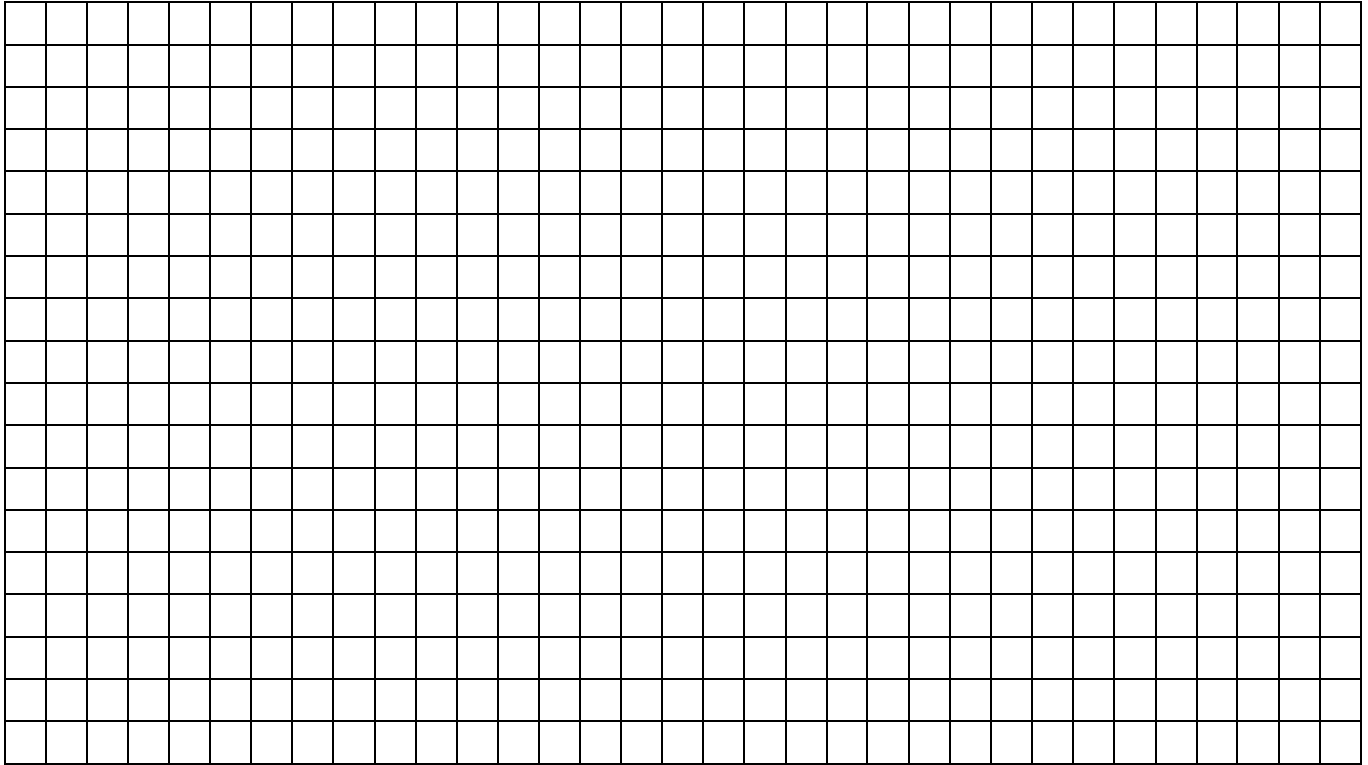
$$14 \times 14 = (10 + 4) \times (10 + 4) = 10 \times 10 + 10 \times 4 + 4 \times 10 + 4 \times 4 = 100 + 40 + 40 + 16 = 196$$

Make a sketch to visualize the expression:

a) $16 \times 23 =$

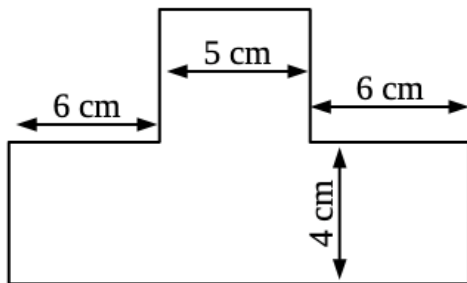


b) $13 \times 28 =$



14

The shape on the drawing is made of a rectangle and a square. Find its perimeter and area.



P = _____

A = _____

15

Compare:

205dm _____ 2500cm

1m 5cm _____ 11dm 5cm

3m 4dm _____ 350cm

98dm _____ 980cm

50dm _____ 5m 10cm

69cm _____ 6dm 9cm

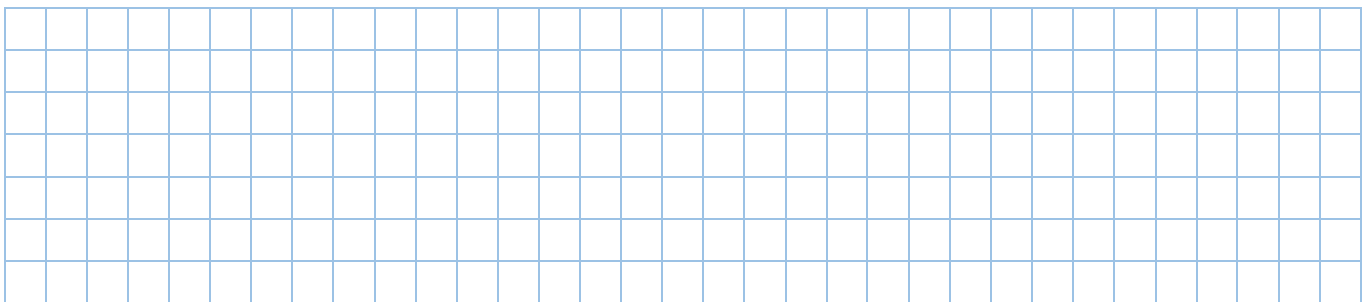
16

Calculate in columns:

$899 + 1512 =$

$308 + 2011 + 89 =$

$8506 - 658 =$



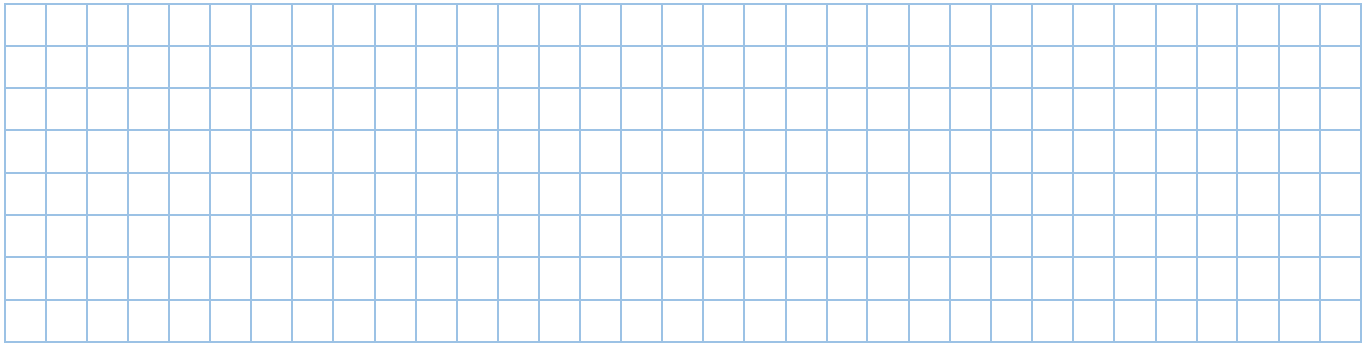
17

Multiply (in columns):

a) $812 \times 16 =$

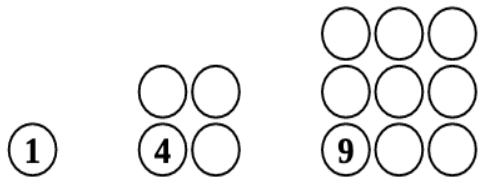
b) $406 \times 204 =$

c) $123 \times 590 =$



18

a) Do you remember “square” numbers? Construct the next two.



b) Do you remember “triangle” numbers? Construct the next four.

