

Homework 17.

During last class we have discussed Biot-Savart-Laplace law. As we remember, this law makes possible calculation of the magnetic field, produced by an arbitrary shape wire (or wires) with current.

1. As an exercise, please find magnetic field, produced by a circular wire loop with current I in the point A on the line, perpendicular to the wire's plane. The radius of the current loop is R and the distance between point A and the center of the loop is h .

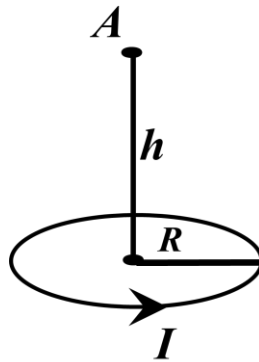


Figure 1.