

Lesson 2. Homework

1 Compare the measurements ($>$, $<$, or $=$).

$3 \text{ cm } \square 9 \text{ cm}$

$4 \text{ in} + 5 \text{ in } \square 5 \text{ in} + 4 \text{ in}$

$5 \text{ in } \square 2 \text{ in}$

$6 \text{ cm} - 3 \text{ cm } \square 6 \text{ cm} + 1 \text{ cm}$

$6 \text{ cm } \square 7 \text{ cm}$

$7 \text{ in} - 4 \text{ in } \square 5 \text{ in} - 4 \text{ in}$

2 Use an appropriate sign ($+$ or $-$).

$4 \square 3 = 7$

$8 \square 4 = 4$

$5 \square 0 = 5$

$5 \square 2 = 7$

$6 \square 5 = 1$

$0 \square 3 = 3$

$9 \square 3 = 6$

$7 \square 2 = 9$

$9 \square 2 = 7$

3 Solve the problem.

In a basket, there were 8 apples. Mom used 4 apples for an apple pie, how many apples are left in the basket?

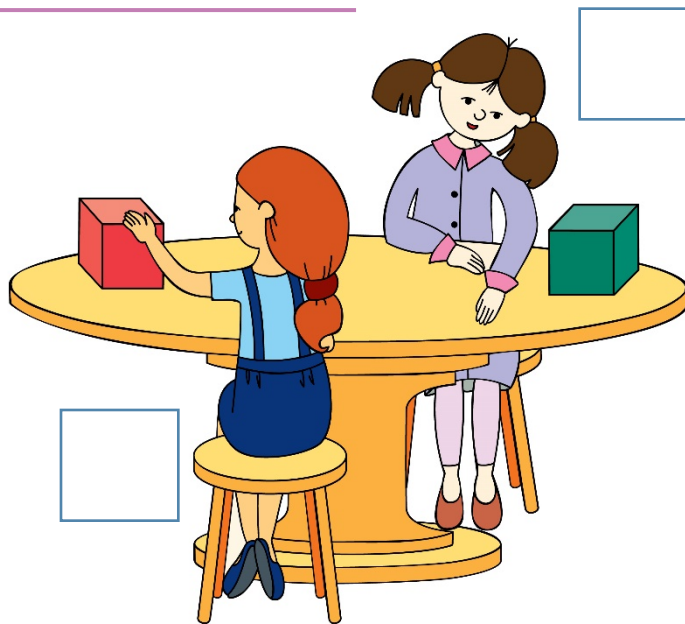
For lunch, kids in Ms. Smith' class brought fruit. There are 9 students. If 5 students brought oranges, how many other fruit students had?



4

The red cube is to the left of Kate, and to the right of Mary.

Use K for Kate and M for Mary to identify each girl.



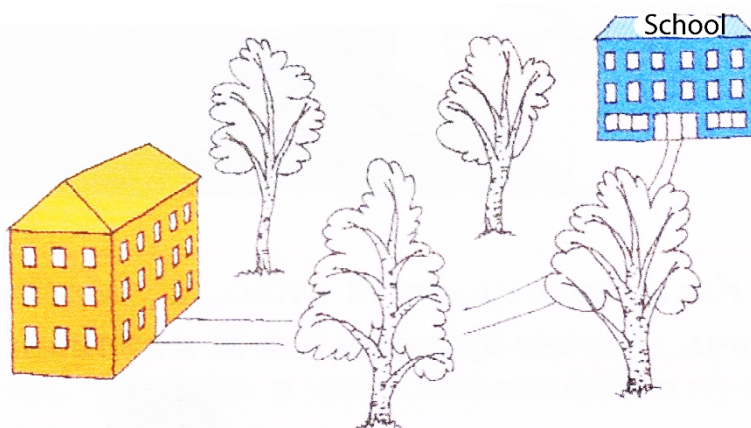
5

Bruce the fish wants to practice a 4-inch dash for the Summer Olympics. Can you please put a finish flag for Bruce?



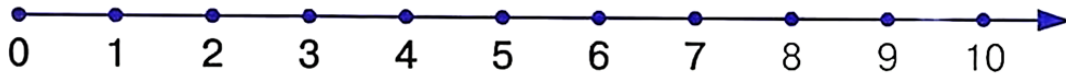
6

Pete walks from school to his home. The trees to the left of Pete have yellow leaves. The trees to the right of Pete have green leaves. Color the trees.



7

Compute.



$$9 - 1 - 5 + 3 =$$

$$2 + 3 - 1 + 6 - 1 =$$

$$4 + 2 - 1 + 1 + 6 - 6 =$$

$$8 + 1 - 6 - 1 =$$

$$7 + 1 - 2 - 5 + 2 =$$

$$7 + 6 - 6 + 5 - 5 - 4 =$$

8

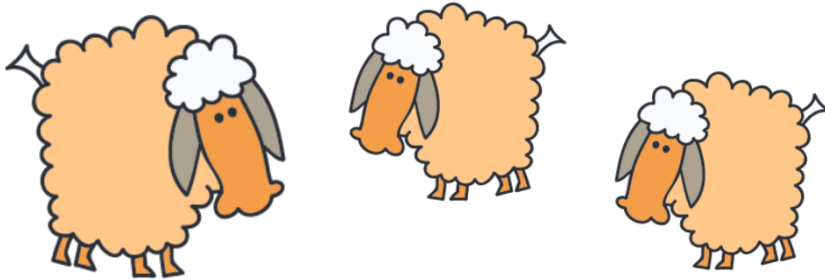
Jack is taller than Anna. Anna is not as tall as Peter. Peter is shorter than Jack.

Who is the tallest? Who is the shortest in the group?



10

From what number of sheep do you need to subtract 3 sheep so that you would be left with none?



One sheep tucked up two legs and fell down. Another sheep tucked up 3 legs and fell down even faster. A third sheep tucked only one leg up and did not fall. How many legs did the sheep tuck up altogether?

11

Complete the pattern.



12

Count the cubes.

